

Registered Nurse and Enrolled Nurse Data: March 2012

Published May 2012

Introduction

This report contains registration information about persons who are registered with the Nursing and Midwifery Board of Australia as either a registered nurse or an enrolled nurse and only as a registered nurse or an enrolled nurse. For information about persons who hold dual registration as both a nurse and a midwife, please refer to the *Nurse and Midwife Registration Data report* at <http://www.nursingmidwiferyboard.gov.au/about/statistics.aspx>

The functions of the Nursing and Midwifery Board of Australia are:

- Registers nurses, midwives and students of nursing and midwifery
- Determines the national registration requirements
- Develops professional standards, codes, guidelines and position statements to guide nursing and midwifery practice
- Manages notifications, investigations and panel hearings
- Assesses internationally qualified nurses and midwives who wish to practise in Australia
- Approves national accreditation standards and accredited programs of study leading to registration and endorsement
- Delegates to state and territory Boards and Committees*, and AHPRA staff, the power to determine individual applications for registration and notifications of a nurse's or midwife's health, performance and/or conduct and a student's health or criminal history

*In NSW, where a co-regulatory model applies and notifications are managed separately, the NSW Board of the NMBA is responsible for the registration of nurses, midwives and students.

The National Board's functions are supported by the [Australian Health Practitioner Regulation Agency \(AHPRA\)](#). For information about legislation governing the National Board and AHPRA see [AHPRA's Legislation & Publications](#) at www.ahpra.gov.au/Legislation-and-Publications.aspx

AHPRA has analysed the National Board's registration data and produced a number of statistical tables about registrants to share with the professions and community. The National Board will update and improve this statistical report regularly.

For more information on nursing and midwifery registration, please see the National Board's website: www.nursingmidwiferyboard.gov.au/Registration-and-Endorsement.aspx

Index of Tables

Nurses: State and Territory by Registration Type	2
Nurses: Age by Registration Type	3
Nurses: Gender by State and Territory by Registration Type	4
Registered Nurses: Endorsement by State and Territory	5

Nursing and Midwifery Board of Australia

GPO Box 9958 | Melbourne VIC 3001 | www.nursingmidwiferyboard.gov.au

Nurses: State and Territory by Registration Type

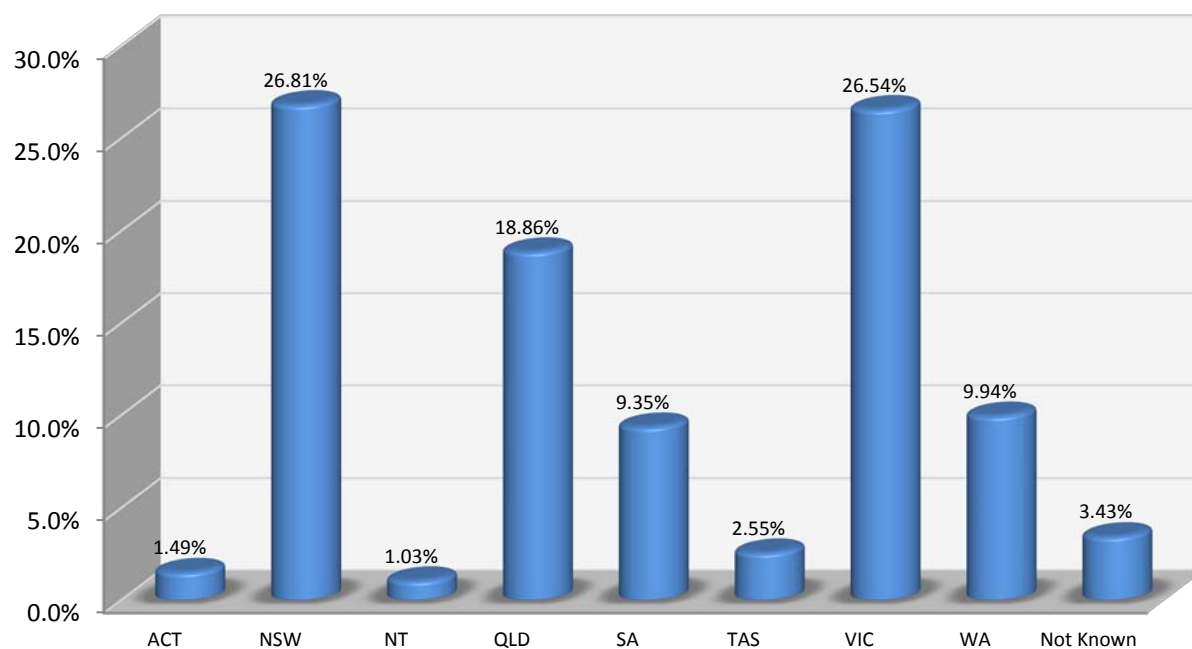
The National Board recognises four nursing and midwifery registration types which are general registration, limited registration, non-practising registration and student registration.

The nurse may be either a registered nurse or an enrolled nurse.

State & Territory	General	Non-practising	Total	% by State & Territory
ACT	4,446	27	4,473	1.49%
NSW	79,297	1,053	80,350	26.81%
NT	3,085	10	3,095	1.03%
QLD	56,408	118	56,526	18.86%
SA	27,958	66	28,024	9.35%
TAS	7,572	59	7,631	2.55%
VIC	79,370	194	79,564	26.54%
WA	29,689	108	29,797	9.94%
Not Known	10,241	32	10,273	3.43%
Total	298,066	1,667	299,733	100.00%

****There is currently no registered nurse or enrolled nurse with Limited Registration.**

% by State & Territory

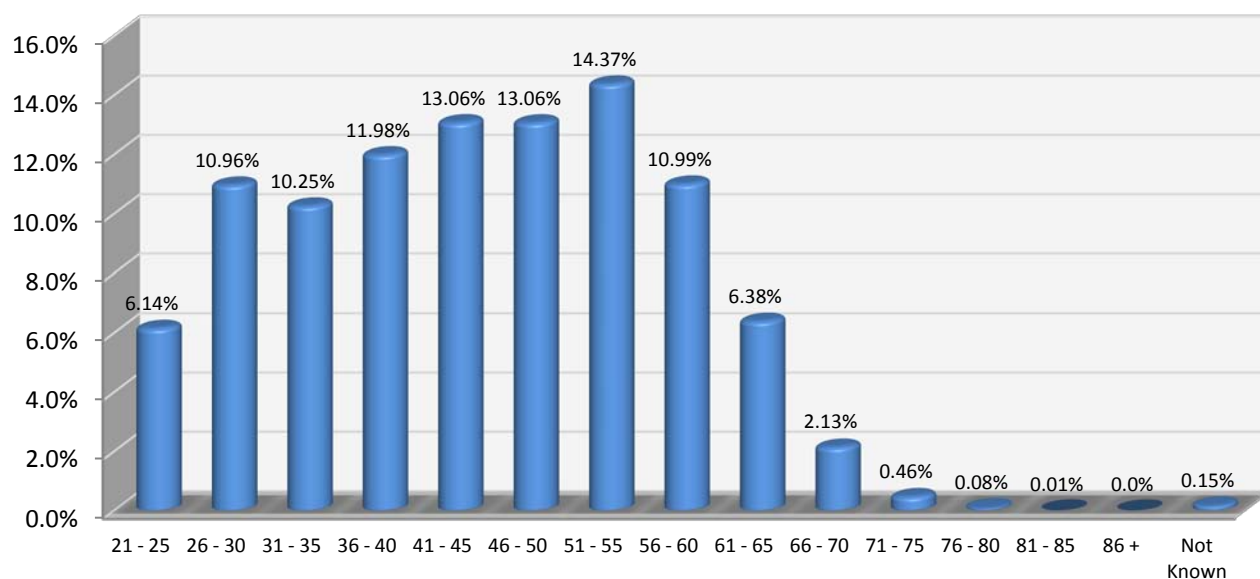


Nurses: Age by Registration Type

Age Group	General	Non-practising	Total	% by Age Group
21 - 25	18,365	30	18,395	6.14%
26 - 30	32,748	91	32,839	10.96%
31 - 35	30,611	108	30,719	10.25%
36 - 40	35,706	198	35,904	11.98%
41 - 45	38,904	241	39,145	13.06%
46 - 50	38,893	240	39,133	13.06%
51 - 55	42,783	277	43,060	14.37%
56 - 60	32,703	233	32,936	10.99%
61 - 65	18,986	131	19,117	6.38%
66 - 70	6,298	75	6,373	2.13%
71 - 75	1,347	27	1,374	0.46%
76 - 80	230	13	243	0.08%
81 - 85	29	1	30	0.01%
86 +	5	2	7	0.0%
Not Known	458		458	0.15%
Total	298,066	1,667	299,733	100.00%

****There is currently no registered nurse or enrolled nurse with Limited Registration.**

% by Age Group



Nurses: Gender by State and Territory by Registration Type

Gender	State & Territory	General	Non-practising	Total Count	% by Gender by State & Territory
Female	ACT	3,983	23	4,006	1.34%
	NSW	69,520	956	70,476	23.51%
	NT	2,617	9	2,626	0.88%
	QLD	50,305	109	50,414	16.82%
	SA	24,731	59	24,790	8.27%
	TAS	6,666	54	6,720	2.24%
	VIC	71,089	182	71,271	23.78%
	WA	27,020	104	27,124	9.05%
	Not Known	8,861	28	8,889	2.97%
	Sub total	264,792	1,524	266,316	88.85%
Male	ACT	463	4	467	0.16%
	NSW	9,720	97	9,817	3.28%
	NT	467	1	468	0.16%
	QLD	6,087	9	6,096	2.03%
	SA	2,973	7	2,980	0.99%
	TAS	906	5	911	0.3%
	VIC	8,269	12	8,281	2.76%
	WA	2,666	4	2,670	0.89%
	Not Known	1,360	4	1,364	0.46%
	Sub total	32,911	143	33,054	11.03%
Not Known	ACT	0	0	0	0.00%
	NSW	57	0	57	0.02%
	NT	1	0	1	0.0%
	QLD	16	0	16	0.01%
	SA	254	0	254	0.08%
	TAS	0	0	0	0.00%
	VIC	12	0	12	0.0%
	WA	3	0	3	0.0%
	Not Known	20	0	20	0.01%
	Sub total	363		363	0.12%
Total		298,066	1,667	299,733	100.00%

****There is currently no registered nurse or enrolled nurse with Limited Registration.**

Registered Nurses: Endorsement by State and Territory

The endorsement of registration identifies registered nurses with additional qualifications and specific expertise. The National Board endorsements for registered nurses are:

- nurse practitioner – includes prescribing scheduled medicines
- registered nurse - supply scheduled medicines (rural and isolated practice)

Endorsement	ACT	NSW	NT	QLD	SA	TAS	VIC	WA	Not Supplied	Total
Nurse Practitioner	24	153	9	139	57	18	79	108	3	590
Registered Nurse - supply scheduled medicines (rural and isolated practice)	0	2	0	32	0	0	1	2	0	37
Total	24	155	9	171	57	18	78	110	3	627

***To obtain the total number of Nurse Practitioners or Registered Nurses endorsed to supply scheduled medicines (rural and isolated practice) in Australia please refer to the Nurse and Midwife Data report and add the data from each table together to obtain the total number by state, territory or nationally.*